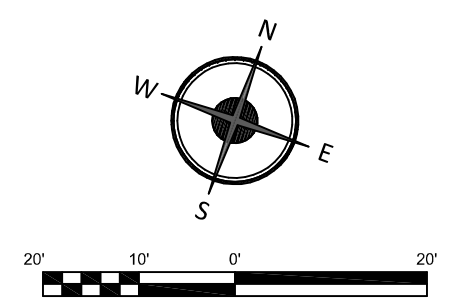
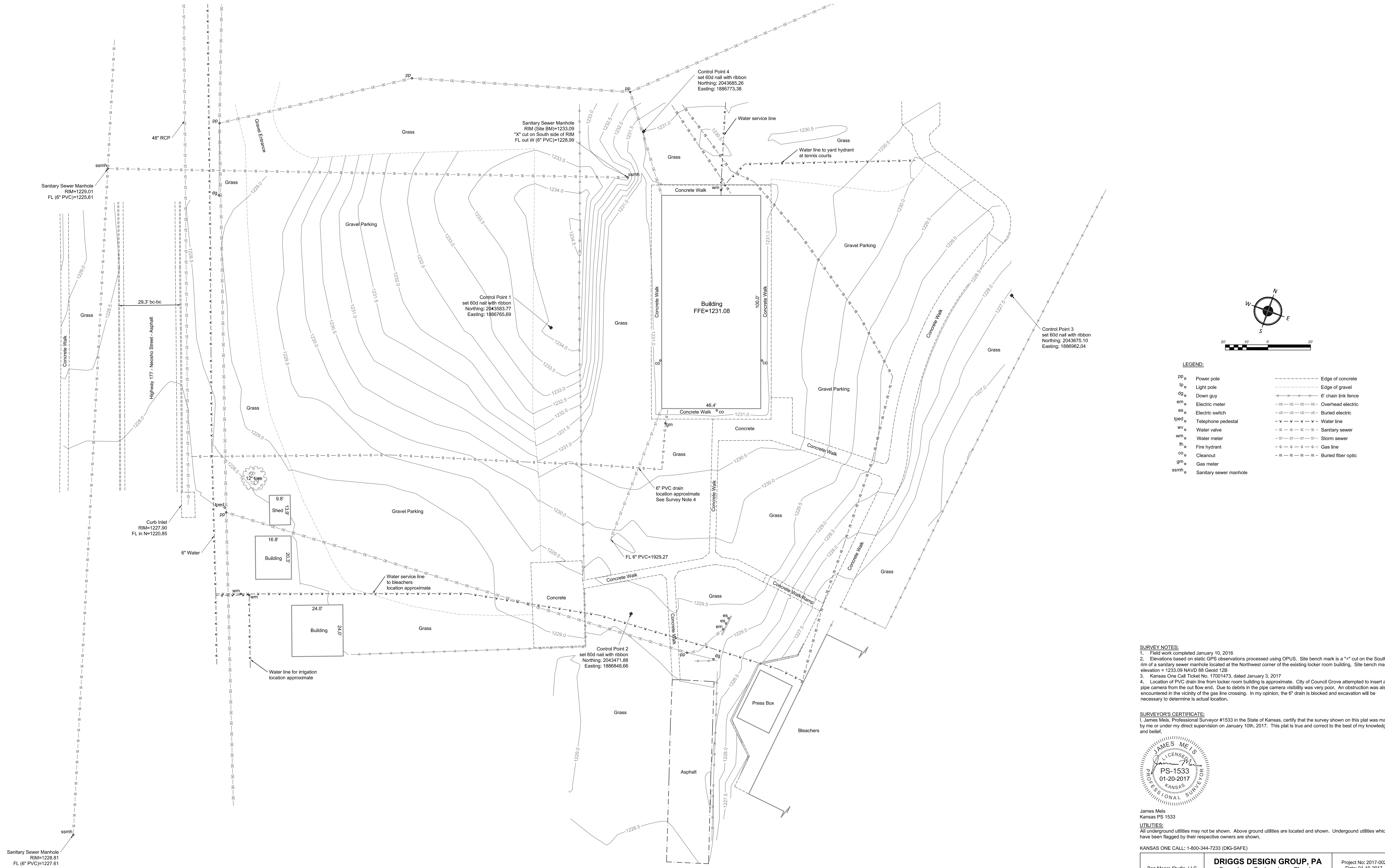


TOPOGRAPHIC SURVEY

USD 417, Council Grove High School, Council Grove, Kansas



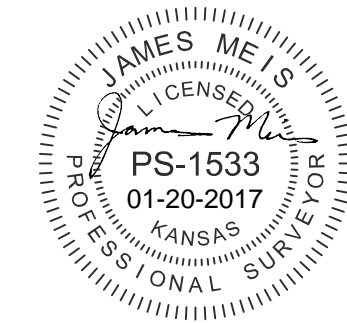
LEGEND:

PP	Power pole	---	Edge of concrete
LP	Light pole	---	Edge of gravel
dg	Down guy	---	6' chain link fence
em	Electric meter	---	Overhead electric
es	Electric switch	---	Buried electric
tped	Telephone pedestal	---	Water line
wv	Water valve	---	Sanitary sewer
wm	Water meter	---	Storm sewer
fh	Fire hydrant	---	Gas line
co	Cleanout	---	Buried fiber optic
gm	Gas meter		
ssmh	Sanitary sewer manhole		

SURVEY NOTES:

- Field work completed January 10, 2016
- Elevations based on static GPS observations processed using OPUS. Site bench mark is a "x" cut on the South rim of a sanitary sewer manhole located at the Northwest corner of the existing locker room building. Site bench mark elevation = 1233.09 NAVD 88 Geoid 12B
- Kansas One Call Ticket No. 17001473, dated January 3, 2017
- Location of PVC drain line from locker room building is approximate. City of Council Grove attempted to insert a pipe camera from the out flow end. Due to debris in the pipe camera visibility was very poor. An obstruction was also encountered in the vicinity of the gas line crossing. In my opinion, the 6" drain is blocked and excavation will be necessary to determine its actual location.

SURVEYOR'S CERTIFICATE:
 I, James Meis, Professional Surveyor #1533 in the State of Kansas, certify that the survey shown on this plat was made by me or under my direct supervision on January 10th, 2017. This plat is true and correct to the best of my knowledge and belief.



James Meis
 Kansas PS 1533

UTILITIES:
 All underground utilities may not be shown. Above ground utilities are located and shown. Underground utilities which have been flagged by their respective owners are shown.

KANSAS ONE CALL: 1-800-344-7233 (DIG-SAFE)		DRIGGS DESIGN GROUP, PA Surveying Engineering Planning James Meis, PS 1533 2819 Plaza Avenue, Hays, Kansas 67601 jmeis@driggsdesign.com (785) 650-9864	Project No: 2017-002 Date: 01-19-2017 Scale: 1" = 20' Sheet No: 1 of 1 Drawn By: KMT
Ben Moore Studio, LLC 1501 H Avenue Council Grove, KS 66846	James Meis, PS 1533 2819 Plaza Avenue, Hays, Kansas 67601 jmeis@driggsdesign.com (785) 650-9864		